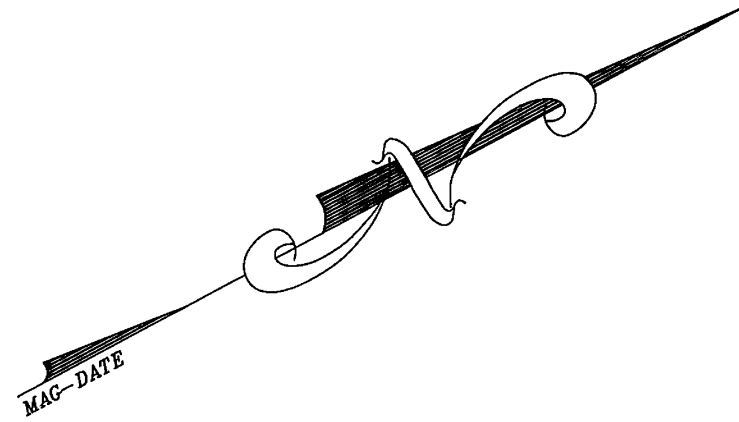


PINE HEIGHTS ATLANTIC COUNTY, N.J.

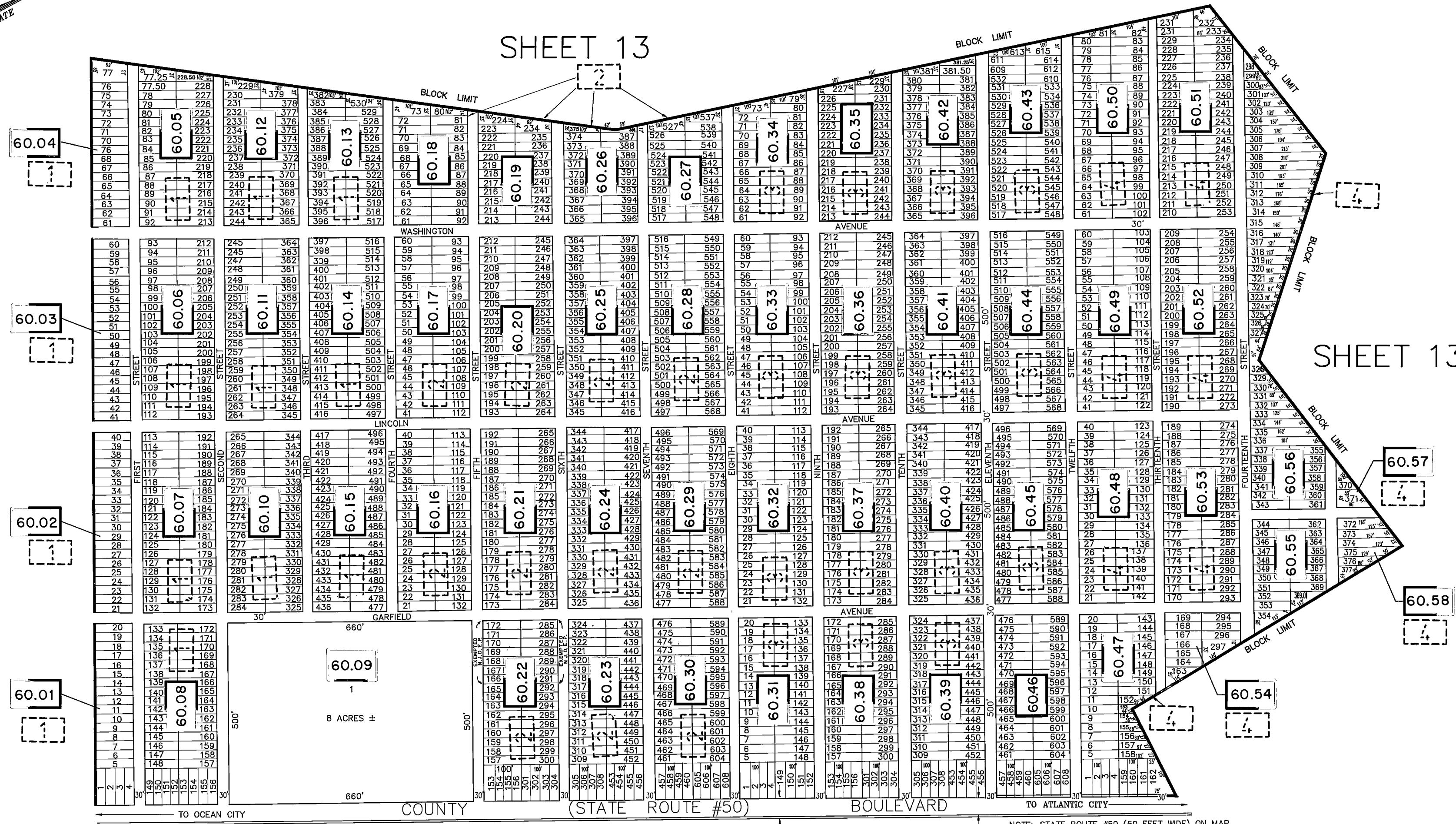
NOTE: ALL REGULAR LOTS ARE 25'X100'
ALL STREETS ARE SHOWN AS 30'



SHEET 13

SHEET 13.02

SHEET 13



NOTE:
THE AREAS, BOUNDARIES AND DIMENSIONS, SHOWN ON THIS TAX MAP,
ARE DERIVED FROM GROUND SURVEYS, AERIAL SURVEYS, AND RECORDED PLANS, MAPS, DEEDS, WILLS,
AND ARE TO BE USED FOR ASSESSMENT PURPOSES ONLY.

NOTE: STATE ROUTE #50 (50 FEET WIDE) ON MAP
OF PINE HEIGHTS
66 FEET WIDE ON MAP OF ROUTE #50

REVISIONS		
12/10/90	REFERENCED OLD BLOCK/LOT NUMBERS	AVIVA ENGINEERING
11/1/94	BL. 60.01 THRU 60.58 WAS BL. 101 THRU 5.01	W.P.H.A.
3/9/98	BL. 60.22, L. 166-172, 285-291, EXEMPT / N.J.D.E.P.	W.P.H.A.

SHEET 11.01

NEW JERSEY DEPARTMENT OF THE TREASURY
DIVISION OF REVENUE
LOCAL PROPERTY BRANCH
APPROVED AS A TAX MAP PRESENT TO THE
PROVISIONS OF CHAPTER 175,176 OF 1913, ETC.
FOR THE DIRECTOR, DIVISION OF REVENUE

By [Signature] P.E. & L.S.
L.I.C. # 15434 CHIEF ENGINEERING SECTION

DATE: 10/19/99 SERIAL NO. 700

TAX MAP
CITY OF ESTELL MANOR
ATLANTIC COUNTY, NJ
SCALE: 1"=150' APRIL 1989
DOUGLAS R. LONG, P.E. & L.S.
LONG ENGINEERING & SURVEYING CO.
591 N.Black Horse Pike Williamstown N.J. 08094

2460-25