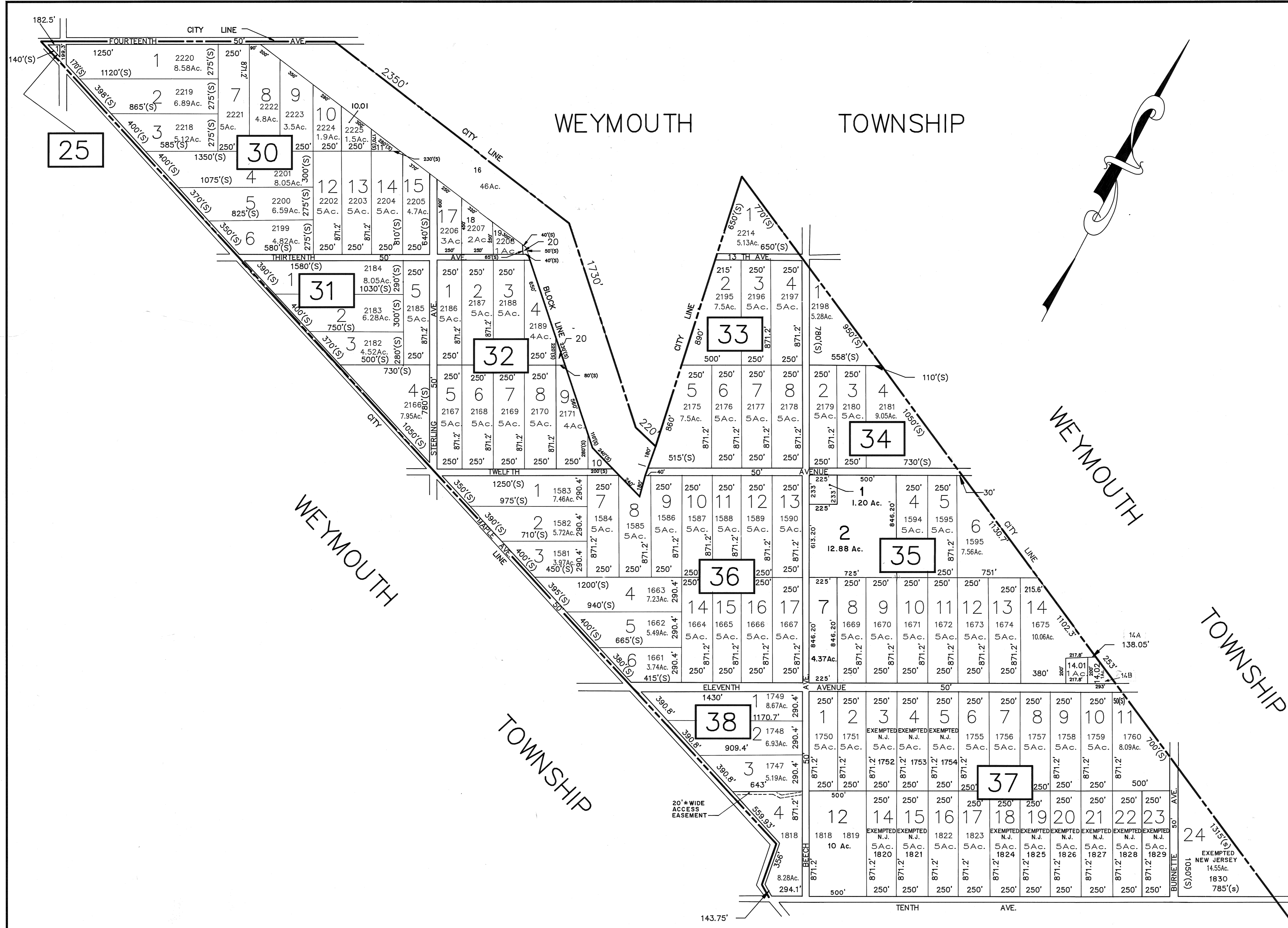


REVISIONS		
12/12/90	REFERENCED OLD BLOCK/LOT NUMBERS	AVIVA ENGINEERING
5-27-94	BLOCK 38, LOT 4, ADDED EASEMENT (20'±)	WPHA
10-25-94	COMBINED BL. 30, 01, L16 WITH BL. 30	WPHA
10-25-94	L17, 18, 19, 20 BL. 30 WAS BL. 33.02	WPHA
10-25-94	L1, BL. 33.01 ADDED TO BL. 33	WPHA
10-25-94	LOT 24, BL. 37 WAS IN BLOCK 40	WPHA
4-13-95	COMBINED LOTS 2, 1, 3, 7, 701, 702, 703 (BLOCK 35)	WPHA
4-12-96	BL. 35; REV'D L-2, ADDED LOTS 1 & 7	WPHA
8-6-96	BLOCK 37, COMBINED LOTS 12 & 13	WPHA
5-2-97	BL. 37, L3, 4, 5, 14, 15, 18-24; ADDED EXEMPTED, N.J.	WPHA
10-29-97	BL. 35; COMBINED PART OF LOT 1 WITH LOT 2	WPHA



SHEET 6

NEW JERSEY DEPARTMENT OF THE TREASURY
 DIVISION OF TAXATION
 LOCAL PROPERTY BRANCH
 APPROVED AS A TAX MAP PURSUANT TO THE
 PROVISIONS OF CHAPTER 175, LAWS OF 1983, ETC.
 FOR THE DIRECTOR, DIVISION OF TAXATION
 BY: *John J. [Signature]* P.E. & L.S.
 L.I.C. # 15434 CHIEF ENGINEERING SECTION
 DATE: 10/19/89

TAX MAP
 CITY OF ESTELL MANOR
 ATLANTIC COUNTY, NJ
 SCALE: 1"=400' APRIL 1989
DOUGLAS R. LONG, P.E. & L.S.
 LONG ENGINEERING & SURVEYING CO.
 591 Black Horse Pike Williamstown N.J. 08094